



SECURE-TECH

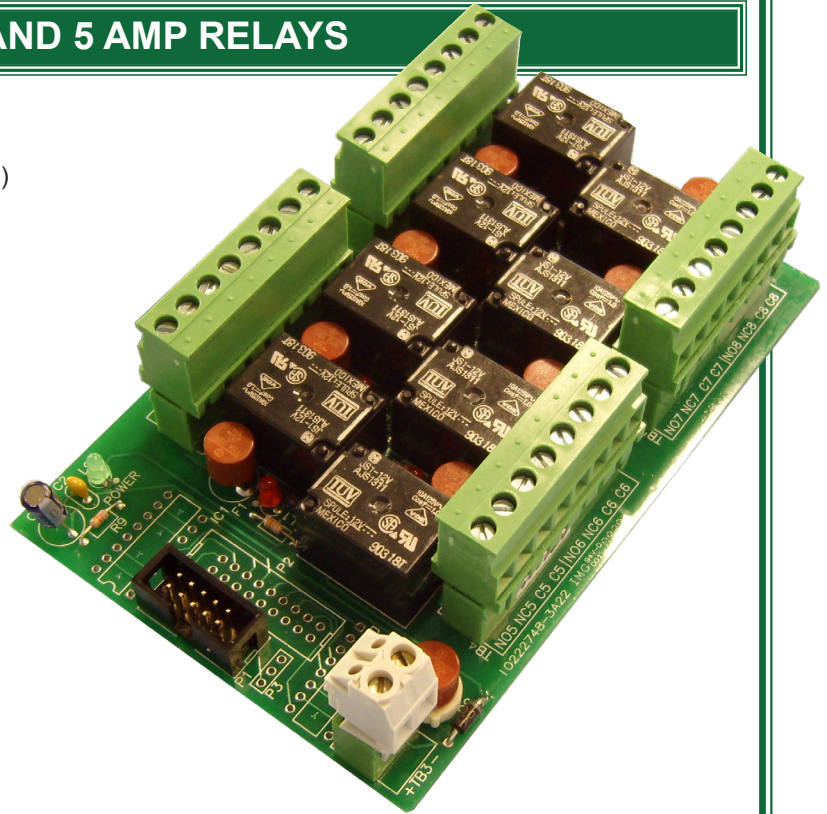
DETENTION ELECTRONIC SYSTEMS
ETECH CONTROLS CORPORATION - MANUFACTURER
4051 ALVIS COURT #3, ROCKLIN, CALIFORNIA, USA 95677
TEL (916) 630-1300 • FAX (916) 630-1100 • FREE (800) 800-2523

**MODEL
HC-0803
HC-0803-5**

8 FUSED 10 AND 5 AMP RELAYS

FEATURES:

- INTERPOSING DEVICE (DRY CONTACT RELAYS)
- 8 FUSED FORM C RELAY OUTPUTS
- 8 RED STATUS LEDs
- FUSED POWER CIRCUIT
- GREEN POWER STATUS LED
- ALL PLUG CONNECTION
- 3.25" SNAP TRACK MOUNT
- 10 AMP RELAYS
- 2 YEAR WARRANTY



FUNCTIONAL DESCRIPTION:

The HC-0803 interfaces between control panels and door locks, lighting circuits, HVAC, etc. A red status LED is provided for each relay.

INPUTS / OUTPUTS:

Eight control switch inputs are provided. Eight form C relay outputs are provided with the contact points plug-in fuse protected.

The relay contacts are rated as follows:

| FORM CUL CLASS B | | CSA |
|------------------|---------|---------|
| 250 VAC | 6 AMPS | 6 AMPS |
| 120 VAC | 10 AMPS | 10 AMPS |
| 30 VDC | 5 AMPS | 5 AMPS |

Standard plug-in fuses are 250 volt, 10 amp or 5 AMP, time lag, UL 198G. Other fuse sizes are available.

The FIELD OUTPUTS are connected to Phoenix type compression screw terminal plugs, sized for 22 to 14 AWG stranded conductors. The CONTROL INPUTS are connected via a 10-pin male header. The mating female ribbon plug is provided.

SIZE:

3.25" W x 5.00" L x 0.90" D
82.6mm W x 127mm L x 22.6mm D

POWER:

12 - 14 VDC, 370ma, 2 amp plug-in fuse, green LED indicator

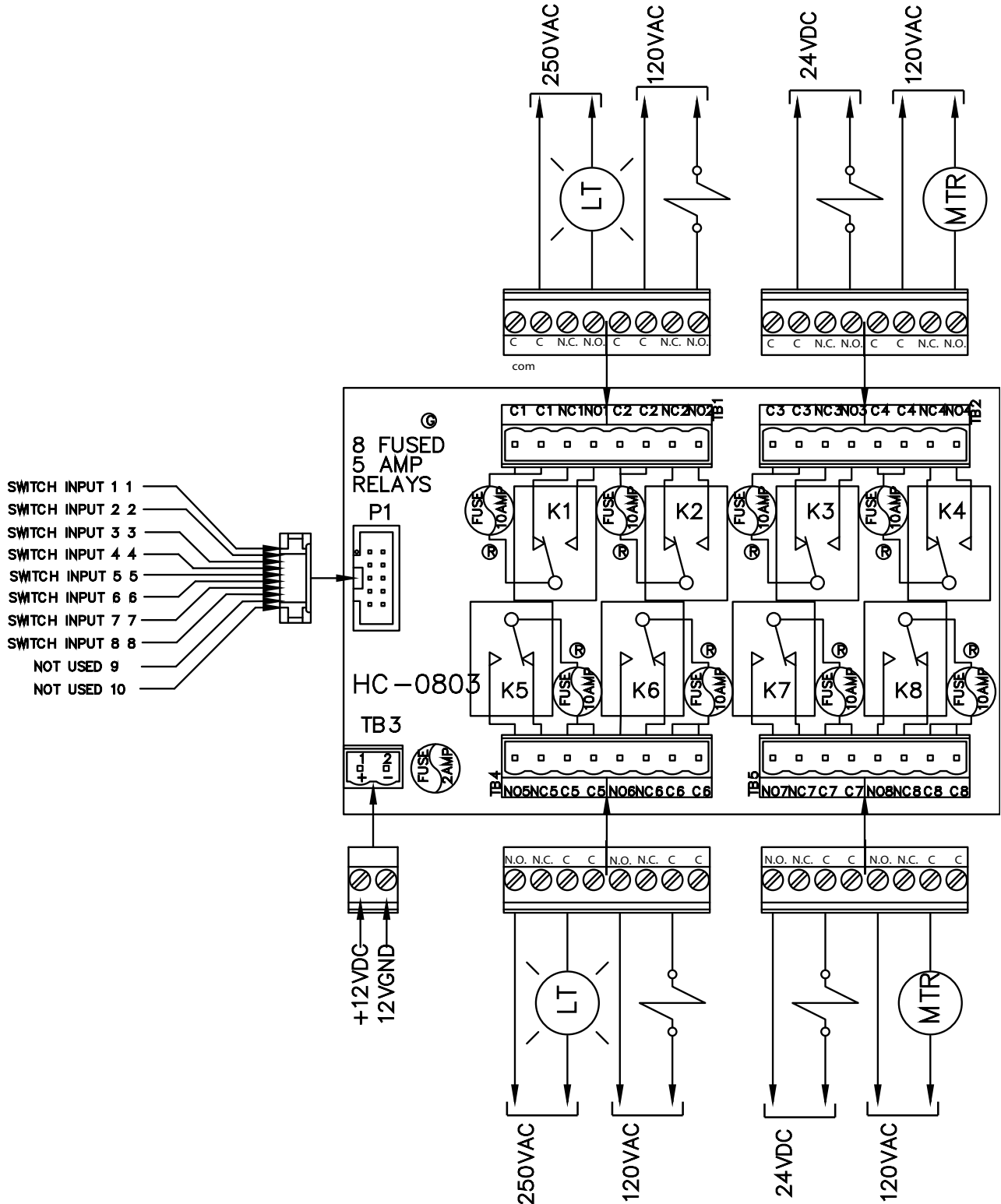
MODEL: HC-0803 10 AMP Relays
HC-0803-5 5 AMP Relays

***Please note: Do not exceed a cumulative total of 10 amps when using relay common terminals for bussing.**



MODEL

HC-0803ver.c 8 FUSED 5 AMP RELAYS HOOK-UP DIAGRAM



*Please note: Do not exceed a cumulative total of 10 amps when using relay common terminals for bussing.